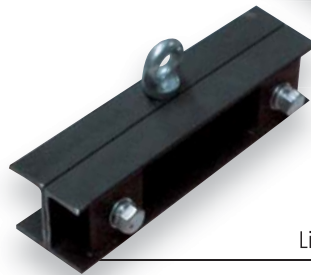


# IF IT IS A **BORE** THINK **FLEXIBORE**



Precision engineered  
and patented couplings



Lifting Clamp

**WATER BORE PUMP**  
**WAREHOUSE**

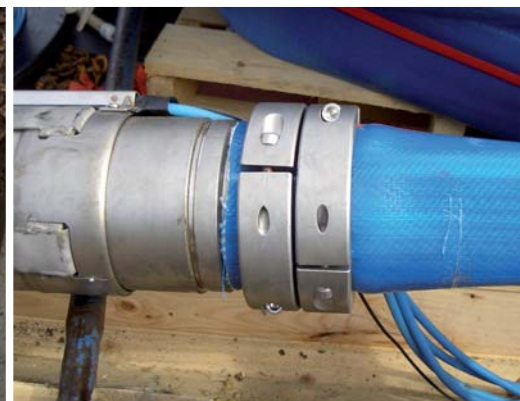
## FITTING OF COUPLING



1. Push Hose on Coupling



2. Attach Bottom Clamp



3. Secure Coupling



Clamp Resting on Casing



Secure Top Clamp



Secure Power Cable to Clamp



Position Bore Cap



# FLEXIBORE

## INSTALLATION BY ROLLER



Gently Lower Pump into Bore



Reel to Lower Pump into Bore



Easy Transportation



Lower Pump into Bore over Roller



Manual Installation



Clamp Resting on Casing

- ✓ Totally corrosion resistant
- ✓ Quick and easy installation and retrieval
- ✓ Reduced head losses and improved flow rates due to swelling under pressure
- ✓ Less labour intensive due to ease of installation

- ✓ Reduced transport costs due to light weight and easy handling
- ✓ Custom lengths made to order
- ✓ Potable water approved: AS 4020
- ✓ All hydrostatically tested



# INSTALLATION BY CRANE



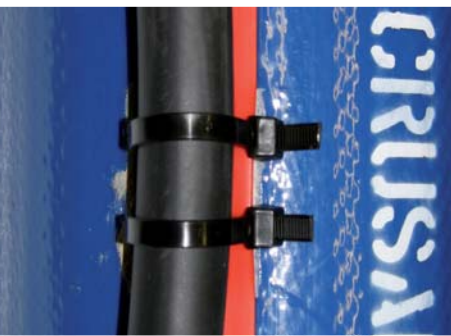
Secure Lifting Clamp



Attach clamp to Hose - ensure power cable is not clamped



# SECURING POWER CABLE



Use of Cable ties to Fix Cable to Hose



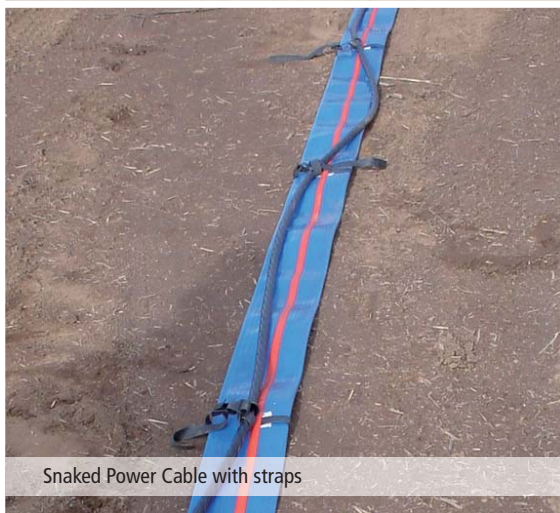
Use of Straps to Fix Cable to Hose



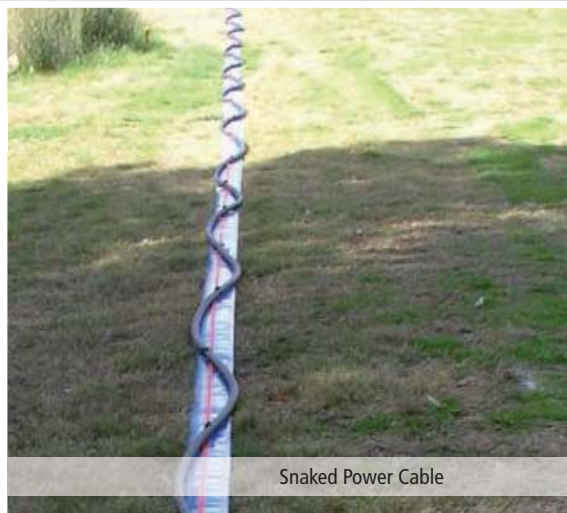
Combined use of Straps and Cable Ties



"Snake" power cable to allow for elongation to compensate for the weight of the pump and water etc.



Snaked Power Cable with straps

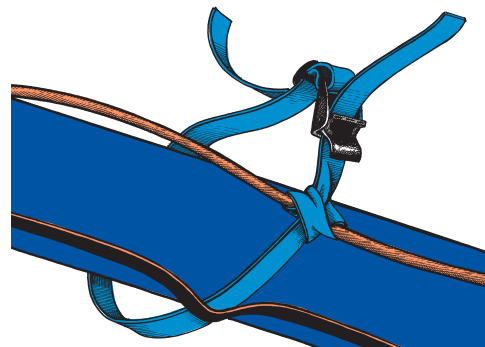


Snaked Power Cable



Heavy duty cable ties.

Straps Polyurethane. One required every metre to support heavy cables and or conduit probes etc.



**WATER BORE PUMP  
WAREHOUSE**

Telephone: 1300 727 042  
Email: [info@waterborepump.com.au](mailto:info@waterborepump.com.au)  
[www.waterborepump.com.au](http://www.waterborepump.com.au)